

St Giles CE Primary School



Safeguarding & Family Support Manager

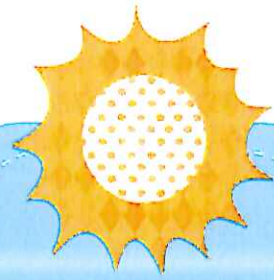


Hi, My name is Lindsey Leonowicz.

What can I do for you?

I act as a link between home and school and can offer advice and support:

- * *To families with worries or concerns about their child's education, behaviour or attendance or well being.*
 - * *On a range of parenting issues.*
- * *On a variety of parent courses and workshops in the local area.*
- * *With practical tasks such as filling in forms.*



My working hours

Tuesday,
Wednesday &
Thursday
8am to 4.30pm

My door is always
open for a chat or
contact me on
01902 368308

