

Walsall SEND Service Communications



Walsall Council

SPRING 2 2025

WELCOME TO THE WALSALL SEND SERVICE SPRING TERM COMMUNICATIONS

These communications are designed for parents and carers of children and young people with Special Educational Needs and Disabilities (SEND). Here, we share important updates, celebrate successes, and highlight opportunities for you to engage with and shape SEND services in Walsall. We are committed to working together to improve support, services, and outcomes for children and young people with SEND. Your voice matters, and we welcome your feedback and involvement.

ARE YOU ON OUR MAILING LIST?



Stay up to date with the latest SEND news, updates, and events in Walsall by joining our mailing list. If you are not already receiving our emails, please contact: localoffer@walsall.gov.uk

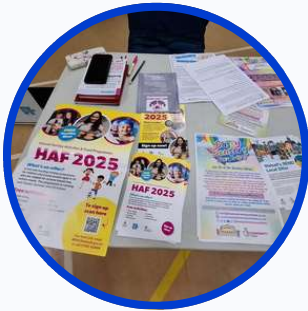
CELEBRATING SUCCESS

- The first meeting of the Parent Partnership Group took place on Monday 24th March, 6 parents/ carers attended and shared some really valuable insights into their journey's. They also gave their thoughts and ideas into the new Working Together Charter we are co-producing.
- PINS Project (Partnerships for Inclusion of Neurodiversity in Schools) has been completed. There has been some fantastic work being done with schools and parents. The feedback gained from the schools that took part has been positive.

TIME TO
Celebrate

CELEBRATING SUCCESS CONT.

- FACE Walsall's Information Fair took place on Friday, 28th March, with a wide range of services in attendance, including Speech and Language, Short Breaks, Home School Transport, Senior Casework Officers from the EHCP team, and training providers for the SEND community. It was wonderful to see so many parents and carers who came to explore the services and gather important information to support their families.



SHARE YOUR LIVED EXPERIENCE!

We are committed to ensuring that parents, carers, children, and young people are at the heart of how SEND services in Walsall are developed and improved. As part of this, we are expanding our Pupil Tracking Audits to make sure families' voices truly shape decision-making.

WHAT ARE PUPIL TRACKING AUDITS?

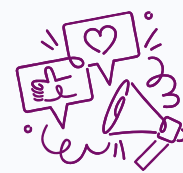
Pupil Tracking Audits allow us to follow a child or young person's journey through their education, health, and care support. By looking at real-life experiences, we can see what is working well and what needs improvement. This helps us ensure that services are meeting needs effectively.

HOW CAN PARENTS AND CARERS GET INVOLVED?

We are inviting parents and carers to take part in this important work by:

- Sharing your child's SEND journey
- Providing feedback on services
- Joining audit review discussions

Share
your
Thoughts



Your
VOICE
MATTERS

Your insights will directly influence service improvements, policy changes, and resource allocation in Walsall. Interested in getting involved? Email: localoffer@walsall.gov.uk to find out more!



FACE WALSALL is an independent Parent Carer Forum, working alongside parents, carers, and professionals to influence and improve SEND services in Walsall. The forum is not a support group but actively gathers parents' voices and experiences to ensure families' needs are at the heart of local decision-making.

WAYS TO GET INVOLVED:

- Join parent engagement events to share your views.
- Attend SEND information fairs and networking events.
- Take part in consultations and service reviews.

For more info please use this link: [FACE Walsall Facebook Group](#) or alternatively drop them an email on: facewalsall@gmail.com

FACE UPCOMING EVENTS



Meet the Walsall SEN Team

**Tues 8th April 10.00- 11.30 Walsall Family
Central & South Hub
Birchills Street, Walsall, WS2 8NF**

**Weds 9th April 10.00 - 11.30 Walsall Family
North Hub
275 Blakenall Lane, Blakenall, Walsall WS3
1HJ**

**Tues 29th April 10.00 - 11.30 Walsall Family
West Hub
Ilmington House, Crescent Road, Wednesbury,
WS10 8AE**

**Tues 20th May 9.30 - 11.30 Walsall Family
East Hub
Silver Court, Brownhills, Walsall, WS8 6HA**

**To book contact
Facewalsall@gmail.com**

An opportunity to meet members from the Walsall SEN Team.

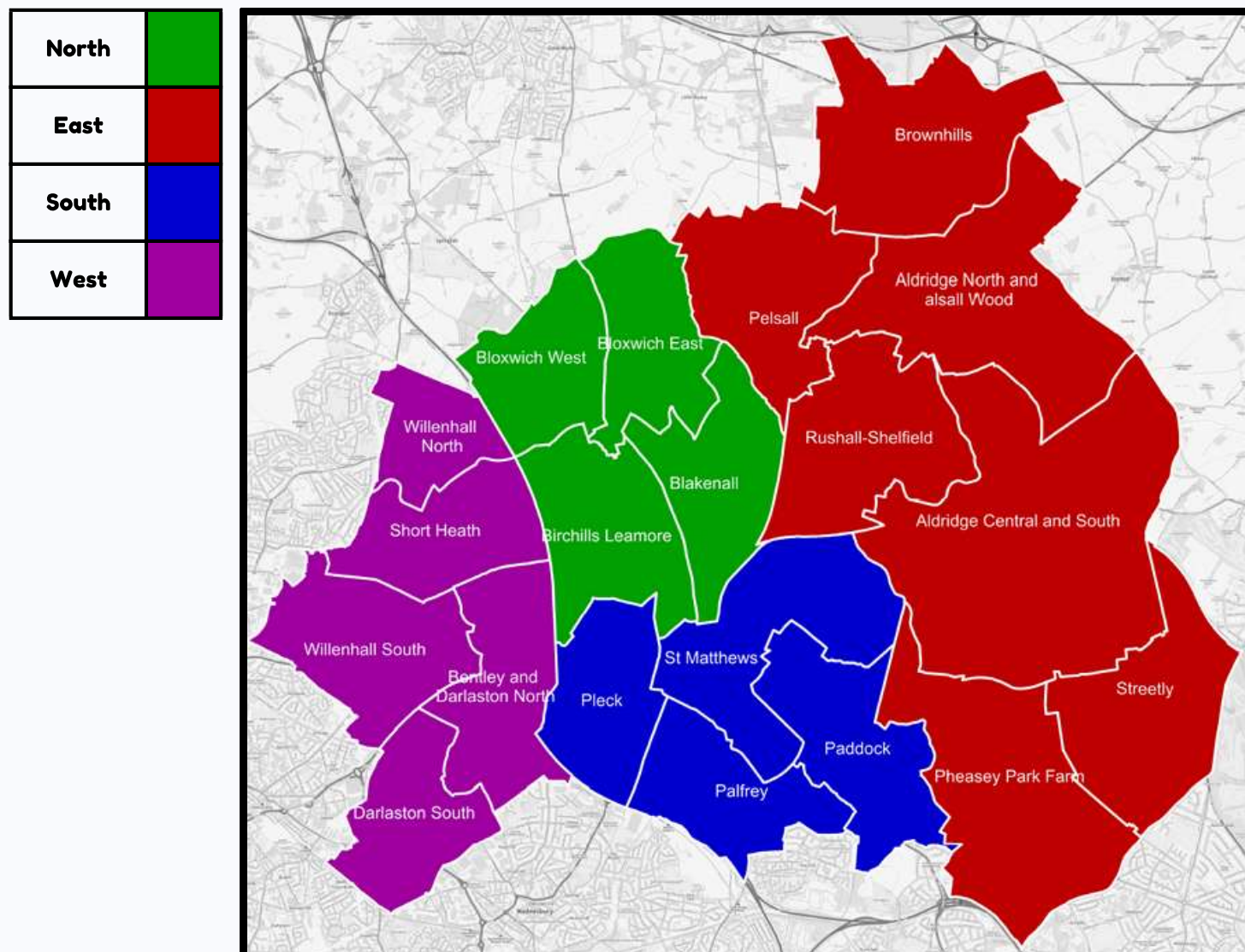
FACE are holding 4 separate coffee mornings in each of the locality Family Hubs.

Come along, have a coffee and hear about the different roles in the SEN Team.

To book your place please email FACE Walsall on: facewalsall@gmail.com

UNDERSTANDING YOUR WALSALL WARDS & LOCALITIES

There are 4 localities in Walsall. The North, East, South and West. Within these localities there are wards. There are 20 wards within Walsall.



Here is a list which locality each ward sits in

North	East	South	West
Birchills Leamore Blakenall Bloxwich West Bloxwich East	Aldridge Central & South Aldridge North & Walsall Wood Brownhills Pelsall Pheasey Park Farm Rushall Shelfield Streetly	Paddock Palfrey Pleck St Matthews	Bentley & Darlaston North Darlaston South Short Heath Willenhall North Willenhall South

JOIN OUR YOUTH SEND FORUM!


YOUTH SEND FORUM

We're looking for amazing young people in **Year 4 or above** who have **Special Educational Needs (SEND)** to join our **Youth SEND Forum**.

If you enjoy sharing ideas and want to help improve SEND services, we'd love for you to get involved!

When & Where:

 **Thursday, 10th April**

 **1:00pm**

 **Online – via Microsoft Teams**

What to Expect:

-  **Share** your thoughts, ideas, and experiences.
-  **Help Improve** SEND support and services in Walsall.
-  **Make new friends** with other young people like you!

Ask a teacher to contact me if you'd like to join!

 samantha.house@walsall.gov.uk



Walsall Council

Are you a young person with SEND who wants to have a say in the services and support available in Walsall? We are re-establishing our Youth SEND Forum.

Get in touch with Samantha House, Local Offer & Engagement Lead, at localoffer@walsall.gov.uk to sign up or find out more!

JOIN OUR SEND PARENT PARTNERSHIP GROUP!

SEND PARENT PARTNERSHIP GROUP

Are you a parent or carer of a child or young person with **Special Educational Needs and/or Disabilities (SEND)**?

We want to hear from you!

Join our **SEND Parent Partnership Group** to share your experiences, provide valuable feedback, and help shape SEND services in Walsall

Why Join?

- **Have your say** - Share your thoughts, ideas, and experiences.
- **Make a difference** - Contribute to improving SEND support and services in Walsall.
- **Connect with others** - Meet with other parents and carers like you!

Together, we can create positive change!

If you're interested in joining, we'd love to hear from you. Please get in touch with Sam:

 samantha.house@walsall.gov.uk



Walsall Council

Are you a parent or carer of a child or young person with SEND and want to have a say in the services and support available in Walsall? We are starting up a new Parent Partnership Group.

Get in touch with Samantha House, Local Offer & Engagement Lead, at samantha.house@walsall.gov.uk to sign up or find out more!

MENTAL HEALTH SUPPORT



Define Fine is a national parent carer led peer support organisation.

Our team all have lived experience of children and young people with school attendance difficulties, sometimes referred to as EBSA: Emotionally Based School Avoidance.

Parent Carers are invited to join our national closed Facebook parent peer support group of over 7.5k members. We provide information, peer to peer support, regular Q&A sessions online bookable through Eventbrite.

For more info use this link: [DefineFine](#)

YOUNGMINDS

The **YOUNGMINDS** website is full of advice and information to give young people the tools to look after their mental health.

They empower parents and professionals to be the best support they can be to the young people in their lives. They give young people the space and confidence to get their voices heard and change the world we live in. Together, we can create a world where no young person feels alone with their mental health.

YOUNGMINDS has a great bank of resources to support children and young people with SEND with their mental health.

For more info check out this link: [YOUNGMINDS](#)



FREE MENTAL HEALTH SUPPORT FOR SECONDARY SCHOOL PUPILS IN THE BLACK COUNTRY

Walsall If you are asked for a code, please enter **BCWA2023**

Wysa is an AI wellbeing coach that has been commissioned by Black Country Health NHS Foundation Trust to give you a safe, non-judgmental space where you can talk about anything and everything that's bothering you. Let off steam and share your worries - Wysa is here to listen.

For more info use this link: [WYSA](#)



EVENTS/ GROUPS



Get ready to sing, dance, and celebrate Birmingham. Join The Music Seekers and an orchestra of 50 amazing musicians for a special concert made just for YOU!

Where and When?

6th April 2025

Stirchley Baths (B30 2JT)

Doors Open: 2:30pm

Start: 3pm

For more information please use this link:

[MusicSeekers](#)

Neurodiversity SHOW

The Neurodiversity Show is the UK's premier exhibition dedicated to neurodiversity.

The show aims to empower education, parents, the workplace, individuals and professionals. This marks a strategic evolution to create a more inclusive and comprehensive platform for showcasing innovations, resources, and support tailored to individuals with neurodiverse differences.

COMING TO THE NEC, BIRMINGHAM FRIDAY 9TH AND SATURDAY 10TH MAY

For more information and to book your tickets visit: [NeurodiversityShow25](#)



Onwards group is open to all parents, caregivers, and young people with ADHD, Autism and Anxiety. Their aim is to bring the community together through regular events and weekly gatherings.

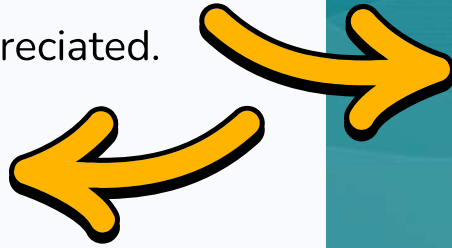
They offer a welcoming space where families can share their experiences, learn from each other, and enjoy fun, engaging activities. They create a supportive, informal environment for families and young people aged 13-24, helping them build connections and feel part of a community that truly understands their journey.

For more info please use this link: [Onwards](#)

SEND NEWSLETTER FEEDBACK

Please could you spare a few minutes to complete this survey on how you received the Spring Edition of the SEND Services Newsletter. Please use the QR code or link below. Your feedback is greatly appreciated.

[NewsletterFeedback](#)



Walsall SEND Service Newsletter



Thanks

FEEDBACK

If you have any feedback or wish something to be included in the next SEND Communications please do not hesitate to get in touch.

Next Issue: SEND Services Communications Summer 1 2025

Submit your updates by 28th April 2025 to be included!

Please use the below emails

Sam: samantha.house@walsall.gov.uk

Local Offer: localoffer@walsall.ov.uk



Thank you for being part of the Walsall SEND community!



Walsall Council

