



## School Newsletter

Friday 13th December 2024

*'You must love one another as I have loved you.'* John 13 v 34.

Working together with love we will provide a happy and nurturing environment where all will, **'learn to love and love to learn'**, making outstanding progress through an enriched and creative curriculum. Through our strong Christian ethos we will celebrate and embrace the richness of our community.

**Learn to Love - Love to Learn**

*'You must love one another as I have loved you.'* John 13 v 34

## Parent Governor Nominations and Election

Closing Date For Nominations: Friday 6th December

Number of nominations: 2

Number of eligible nominations: 1

\*1 nominee was not a parent of a child in school.

Mr Ian Tarver has therefore been appointed as a Parent Governor due to being the only eligible nominee. No ballot required.

## Christmas Toy Raffle

Thank you to everyone who supported with the Christmas Toy Raffle again this year. The draw has now been held and winning parents will have received a text message from the school.

**WE ARE A UNICEF GOLD RIGHTS RESPECTING SCHOOL**

Children's rights are learned, understood and lived in this school.





# CHRISTMAS CLASS PARTIES

FRIDAY 20TH DECEMBER

Exciting Prizes

Sweet Treats

Music, Fun and Games

Christmas Party Themed

Non-Uniform

Donations on the gate  
welcomed





## **Grumpy Old Scrooge... Friday 20th December**

**Years 1 to 6  
Tickets: £5.00 (Book Online)**

As is tradition at St Giles' CE Primary, we welcome back Rage Arts Theatre on Friday 20th December for three festive performances of 'Grumpy Old Scrooge'. Please support with contributions, without which we cannot put on enrichment events.



## **Christmas Crafts and Stories**

Parents are welcome to join us in the School Dining Hall for Christmas Crafts and Stories. Please sign up via the School Gateway App.

**Monday 16th December**

10am (Nursery am)

2.00pm (Nursery pm)

**Tuesday 17th December**

10am (RS)

2pm (RG)



Christmas Events  
St Giles' Church

**Wednesday 18th December**

**Year 2 Christmas Celebration**  
**9.00am**

**Year 1 Christmas Celebration**  
**10.30am**



CHRISTMAS CHOIR

DPC

## School Choir Christmas Celebration


The choir will be singing a range of traditional and contemporary songs on Thursday 19th December from 4.00-4.30pm in St Giles Church.

Parents/carers and family members are very welcome to attend, there is plenty of seating available.

**Members of the community, including churches in Willenhall have also been invited to attend.**

This wonderful festive concert, not to be missed.

Refreshments and Mince Pies will be available.



**Christmas  
Musical Showcase  
St Giles' School Hall  
Parents/Carers Welcome**

**Wednesday 18th  
December  
4.00pm-4.30pm  
(Wednesday Violins and  
Recorders)**

**Friday 20th December  
4.00pm-4.30pm  
(Friday Violins and  
Recorders)**

Morrisons Community Christmas Sing  
Along

The School Choir performed a selection of their favourite Christmas songs today, spreading joy and happiness to shoppers at Morrisons. Thank you to those who came along to support.

If you missed the School Choir at Morrisons today, you can get another chance to hear their wonderful voices and Christmas Music at the Salvation Army Community Christmas Sing Along.

All are very welcome to attend.  
**Thursday 19th December - 11.00am**



**Giving  
Hope  
Today**



# Class Charter Presentations In Church

## Parents and Carers Welcome

9.00am start

Dates	UNICEF Charters Presentation Order
Friday 27 <sup>th</sup> September,2024	6G
Friday 4 <sup>th</sup> October,2024	6S
Friday 11 <sup>th</sup> October,2024	5S
Friday 18 <sup>th</sup> October,2024	5G
Friday 8 <sup>th</sup> November,2024	4G
Friday 15 <sup>th</sup> November,2024	4S
Friday 22 <sup>nd</sup> November,2024	3G
Friday 29 <sup>th</sup> November,2024	3S
Friday 6 <sup>th</sup> December,2024	2S and 2G 2.30pm
<b>Friday 10<sup>th</sup> January,2025</b>	<b>1G</b>
Friday 17 <sup>th</sup> January,2025	1S
Friday 24 <sup>th</sup> January,2025	Reception & Nursery

**WE ARE A UNICEF GOLD RIGHTS RESPECTING SCHOOL**

**Children's rights are learned, understood and lived in this school.**



## School Nurse Service

# Your School Nurse service offer FREE virtual workshops for Parents/Carers

Are you a Parent/Carer of a child or young person who is struggling with any of the following:

Sleep

Behaviour

Emotions

Toileting *(training and/or common problems)*

Healthy Lifestyles

Fussy Eating

Bedwetting

Scan the QR code for more information



Do you need advice and support about other health issues?  
You can call our Single Point of Access on **01922 423349**.

We have resources to help you:

- Health for Teen Website for teenagers: [www.healthforteens.co.uk](http://www.healthforteens.co.uk)
- Health for Kids Website for children: [www.healthforkids.co.uk](http://www.healthforkids.co.uk)
- School Nursing Service Webpages: [www.walsallhealthcare.nhs.uk/our-services/school-nursing](http://www.walsallhealthcare.nhs.uk/our-services/school-nursing)
- ChatHealth – text messaging service to contact a School Nurse for advice
  - Teen ChatHealth - **07480 635363**
  - Parent ChatHealth - **07520 634909**

## HCP 0-19 Service

# Are you a parent/carer of a child/young person with Special Educational Needs and/or Disabilities?

Our SEND Team are offering weekly drop-in sessions covering the following:



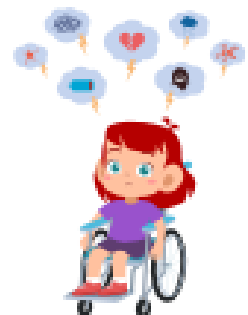
Toileting

### Behaviour



Fussy Eating

### Sleep



Emotions

🕒 9:30am-11:30am

📅 Every Thursday

📍 Child Development Centre, Coalheath Lane, Walsall, WS4 1NG

If you require advice and support from the Health Visiting Service, School Nurse Service or any of our teams, please contact our **Single Point of Access** on **01922 603074** or **send a text explaining your concerns** with your **child's name, date of birth** and **NHS number** to **07520 634909**.



# Should I keep my child off school?



## Yes

### Until...

<b>Chickenpox</b>	at least 5 days from the onset of the rash and until all blisters have crusted over
<b>Diarrhoea and Vomiting</b>	48 hours after their last episode
<b>Cold and Flu-like illness (including COVID-19)</b>	they no longer have a high temperature and feel well enough to attend. Follow the national guidance if they've tested positive for COVID-19.
<b>Impetigo</b>	their sores have crusted and healed, or 48 hours after they started antibiotics
<b>Measles</b>	4 days after the rash first appeared
<b>Mumps</b>	5 days after the swelling started
<b>Scabies</b>	they've had their first treatment
<b>Scarlet Fever</b>	24 hours after they started taking antibiotics
<b>Whooping Cough</b>	48 hours after they started taking antibiotics

## No

but make sure you let their school or nursery know about...

<b>Hand, foot and mouth</b>	<b>Glandular fever</b>
<b>Head lice</b>	<b>Tonsillitis</b>
<b>Threadworms</b>	<b>Slapped cheek</b>



SCAN ME

### Advice and guidance

To find out more, search for health protection in schools or scan the QR code or visit <https://qrco.de/minfec>.

## Term Dates

### **2024/25 academic year**

Autumn term 2024

Term ends: Friday 20 December 2024

Spring term 2025

Term starts: Monday 6 January 2025

Half term holiday: Monday 17 February 2025 to Friday 21 February 2025

Term ends: Friday 11 April 2025

Summer term 2025

Term starts: Monday 28 April 2025

Half term holiday: Monday 26 May 2025 to Friday 30 May 2025

Term ends: Monday 21 July 2025

### **INSET Days / Non– Pupil Days**

Half term holiday: Monday 26 May 2025 to Friday 30 May 2025

Term ends: Monday 21 July 2025

~~INSET 1– Monday 2 September 2024~~

~~INSET 2– Wednesday 25th September 2024~~

**INSET 3– Wednesday 29th January 2025**

INSET 4– Wednesday 25th June 2025

INSET 5– Monday 21 July 2025



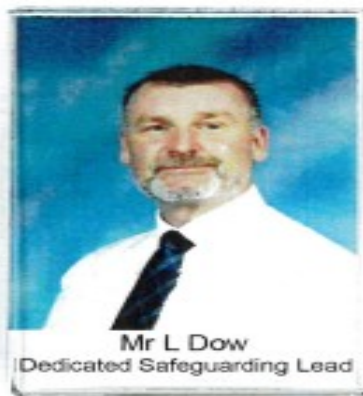
# St Giles' CE Primary School **Safeguarding Team**



Mr Mark Dakin  
Headteacher



Mrs Harsimrat Kaur Mavi  
Deputy Headteacher



Mr L Dow  
Dedicated Safeguarding Lead



Mrs Lindsey Leonowicz  
Safeguarding Manager



Mrs Chemaine Green  
Mental Health +  
Behaviour Support Worker



Cllr. Simran Cheema  
Safeguarding Governor

## Safeguarding at St Giles' CE Primary School

2024/25

If you have any Safeguarding Concerns please contact

Mr Dow on:

07932 708724

[ldow@st-giles.walsall.sch.uk](mailto:ldow@st-giles.walsall.sch.uk)

NSPCC ™

**HELPLINE**

**0808 800 5000**

**help@nspcc.org.uk**

**If you have any concerns about a child, trust your instincts and contact the NSPCC Helpline. Our specialist team will listen, advise and take any action needed.**

An estimated 1 in 20 children have experienced sexual abuse. And child sexual abuse is under-reported by adults. It's time for that to change.

It's never too soon to talk to us. And what you share could make a life-changing difference to a child.

You can contact the NSPCC Helpline by calling 0808 800 5000, emailing [help@NSPCC.org.uk](mailto:help@NSPCC.org.uk) or completing our report abuse online form.

Due to an increase in demand across our service, our voice Helpline is currently available 11am–5pm Monday to Friday. You can still email [help@NSPCC.org.uk](mailto:help@NSPCC.org.uk) or complete our report abuse online form at any time for free. You don't have to say who you are.

**If you think a child is in immediate danger, please call the police on 999 straight away.**