



School Newsletter

Friday 8th November 2024

'You must love one another as I have loved you.' John 13 v 34.

Working together with love we will provide a happy and nurturing environment where all will, **'learn to love and love to learn'**, making outstanding progress through an enriched and creative curriculum. Through our strong Christian ethos we will celebrate and embrace the richness of our community.

Learn to Love - Love to Learn

'You must love one another as I have loved you.' John 13 v 34



ROYAL BRITISH LEGION

Remembrance 2024

On 6th June 2024, the UK commemorated the 80th anniversary of the Normandy Landings on 6th June 1944 with a series of major commemorations and events across the UK and in France.

Also known as D-Day, the historic operation saw the Allied Forces mount a large-scale invasion of Nazi-occupied France that ultimately tipped the course of the Second World War in the Allies' favour.

During the week of 3rd June, children learned about the D-Day landings – a battle that took place 80 years ago on **6th June 1944** – an event that is widely considered to be the turning point of World War Two, with the Allied forces successfully invading the beaches of northern France and gaining a foothold in Europe.

The school was asked by Willenhall Branch of the Royal British Legion to design pictures for the Remembrance Day Services Booklet, that will be distributed within the town on Remembrance Sunday.

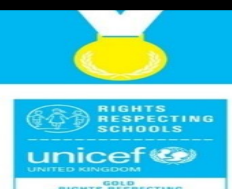
Today, we remembered the fallen in church and prayed for the victims of war and the families of those affected across the world.

You can explore the Commonwealth War Graves in St Giles' Cemetery by clicking the link below.

[St Giles Church of England Primary School - World War One- 28 Jul 1914 – 11 Nov 1918](#)

WE ARE A UNICEF GOLD RIGHTS RESPECTING SCHOOL

Children's rights are learned, understood and lived in this school.





**National
Education
Nature Park**

Royal Horticultural Society—Nature Parks Grant

I am pleased to confirm that the school has received £10,000 funding to turn grey areas of the school green.

Thanks to the National Nature Park programme, we now have willow structures planted within the grounds. Willow structures will sustain over 200 different types of insects – feeding many species of birds .

It is also one of the best carbon capturing native trees we have in the UK.



RHS Nature Park is an exciting project that connects children and young people to nature and empowers them to play a part in improving biodiversity and reducing climate change." Significant planting has taken place around the school site, please take a look by following the school on X.

@StGilesPrimary





Calling All Year 6 Parents!

It is a tradition at St Giles' CE Primary School, that parents work together to arrange and organise the end of year leavers' celebration in July for both pupils and parents.



There will be a stall in church on:
Saturday 30th November (School and Church Christmas Fair) to raise funds for the leavers' event.

Please do save the date and come along to support.



Christmas Events
St Giles' Church

Wednesday 11th December

**Nursery and Reception
Christmas Celebration**

11.00am (Nursery am + RS)

2.00pm (Nursery pm + RG)



Christmas Crafts and Stories

Parents are welcome to join us in the School Dining Hall for Christmas Crafts and Stories. Please sign up via the School Gateway app.

Monday 16th December

10am (Nursery am)

2.00pm (Nursery pm)

Tuesday 17th December

10am (RS)

2pm (RG)



Christmas Events
St Giles' Church

Wednesday 18th December

Year 2 Christmas Celebration
9.00am

Year 1 Christmas Celebration
10.30am



CHRISTMAS CHOIR

DPC

Christmas Musical Performances

The choir will be singing a range of traditional and contemporary songs on Thursday 19th December from 4.00-4.30pm in St Giles Church.

Parents/carers and family members are very welcome to attend, there is plenty of seating available.

Members of the community, including churches in Willenhall have also been invited to attend.

This wonderful festive concert, not to be missed.

Refreshments and Mince Pies will be available.

Class Charter Presentations In Church

Parents and Carers Welcome

9.00am start

Dates	UNICEF Charters Presentation Order
Friday 27 th September,2024	6G
Friday 4 th October,2024	6S
Friday 11th October,2024	5S
Friday 18th October,2024	5G
Friday 8th November,2024	4G
Friday 15 th November,2024	4S
Friday 22 nd November,2024	3G
Friday 29 th November,2024	3S
Friday 6 th December,2024	2G
Friday 13 th December,2024	2S
Friday 10 th January,2025	1G
Friday 17 th January,2025	1S
Friday 24 th January,2025	Reception & Nursery

WE ARE A UNICEF GOLD RIGHTS RESPECTING SCHOOL

Children's rights are learned, understood and lived in this school.



School Nurse Service

Your School Nurse service offer FREE virtual workshops for Parents/Carers

Are you a Parent/Carer of a child or young person who is struggling with any of the following:

Sleep

Behaviour

Emotions

Toileting *(training and/or common problems)*

Healthy Lifestyles

Fussy Eating

Bedwetting

Scan the QR code for more information



Do you need advice and support about other health issues?
You can call our Single Point of Access on **01922 423349**.

We have resources to help you:

- Health for Teen Website for teenagers: www.healthforteens.co.uk
- Health for Kids Website for children: www.healthforkids.co.uk
- School Nursing Service Webpages: www.walsallhealthcare.nhs.uk/our-services/school-nursing
- ChatHealth – text messaging service to contact a School Nurse for advice
 - Teen ChatHealth - **07480 635363**
 - Parent ChatHealth - **07520 634909**

HCP 0-19 Service

Are you a parent/carer of a child/young person with Special Educational Needs and/or Disabilities?

Our SEND Team are offering weekly drop-in sessions covering the following:



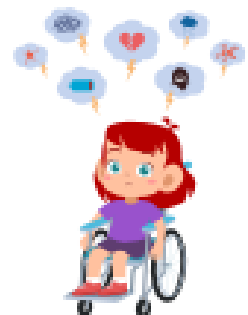
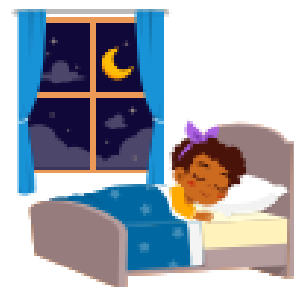
Toileting

Behaviour



Fussy Eating

Sleep



Emotions

🕒 9:30am-11:30am

📅 Every Thursday

📍 Child Development Centre, Coalheath Lane, Walsall, WS4 1NG

If you require advice and support from the Health Visiting Service, School Nurse Service or any of our teams, please contact our **Single Point of Access** on **01922 603074** or **send a text explaining your concerns** with your **child's name, date of birth** and **NHS number** to **07520 634909**.



Should I keep my child off school?

Yes

Until...

Chickenpox	at least 5 days from the onset of the rash and until all blisters have crusted over
Diarrhoea and Vomiting	48 hours after their last episode
Cold and Flu-like illness (including COVID-19)	they no longer have a high temperature and feel well enough to attend. Follow the national guidance if they've tested positive for COVID-19.
Impetigo	their sores have crusted and healed, or 48 hours after they started antibiotics
Measles	4 days after the rash first appeared
Mumps	5 days after the swelling started
Scabies	they've had their first treatment
Scarlet Fever	24 hours after they started taking antibiotics
Whooping Cough	48 hours after they started taking antibiotics

No

but make sure you let their school or nursery know about...

Hand, foot and mouth	Glandular fever
Head lice	Tonsillitis
Threadworms	Slapped cheek



SCAN ME

Advice and guidance

To find out more, search for health protection in schools or scan the QR code or visit <https://qrc0.de/minfec>.

Term Dates

2024/25 academic year

Autumn term 2024

Term starts: Monday 2 September 2024

Half term holiday: Monday 28 October 2024 to Friday 1 November 2024

Term ends: Friday 20 December 2024

Spring term 2025

Term starts: Monday 6 January 2025

Half term holiday: Monday 17 February 2025 to Friday 21 February 2025

Term ends: Friday 11 April 2025

Summer term 2025

Term starts: Monday 28 April 2025

Half term holiday: Monday 26 May 2025 to Friday 30 May 2025

Term ends: Monday 21 July 2025

INSET Days / Non-Pupil Days

Half term holiday: Monday 26 May 2025 to Friday 30 May 2025

Term ends: Monday 21 July 2025

~~INSET 1 – Monday 2 September 2024~~

~~INSET 2 – Wednesday 25th September 2024~~

INSET 3 – Wednesday 29th January 2025

INSET 4 – Wednesday 25th June 2025

INSET 5 – Monday 21 July 2025



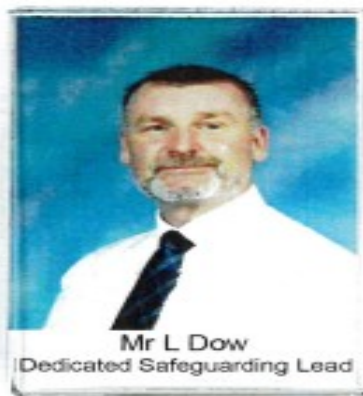
St Giles' CE Primary School **Safeguarding Team**



Mr Mark Dakin
Headteacher



Mrs Harsimrat Kaur Mavi
Deputy Headteacher



Mr L Dow
Dedicated Safeguarding Lead



Mrs Lindsey Leonowicz
Safeguarding Manager



Mrs Chemaine Green
Mental Health +
Behaviour Support Worker



Cllr. Simran Cheema
Safeguarding Governor

Safeguarding at St Giles' CE Primary School

2024/25

If you have any Safeguarding Concerns please contact

Mr Dow on:

07932 708724

ldow@st-giles.walsall.sch.uk

NSPCC ™

HELPLINE

0808 800 5000

help@nspcc.org.uk

If you have any concerns about a child, trust your instincts and contact the NSPCC Helpline. Our specialist team will listen, advise and take any action needed.

An estimated 1 in 20 children have experienced sexual abuse. And child sexual abuse is under-reported by adults. It's time for that to change.

It's never too soon to talk to us. And what you share could make a life-changing difference to a child.

You can contact the NSPCC Helpline by calling 0808 800 5000, emailing help@NSPCC.org.uk or completing our report abuse online form.

Due to an increase in demand across our service, our voice Helpline is currently available 11am–5pm Monday to Friday. You can still email help@NSPCC.org.uk or complete our report abuse online form at any time for free. You don't have to say who you are.

If you think a child is in immediate danger, please call the police on 999 straight away.