



School Newsletter

Friday 15th November 2024

'You must love one another as I have loved you.' John 13 v 34.

Working together with love we will provide a happy and nurturing environment where all will, **'learn to love and love to learn'**, making outstanding progress through an enriched and creative curriculum. Through our strong Christian ethos we will celebrate and embrace the richness of our community.

Learn to Love - Love to Learn

'You must love one another as I have loved you.' John 13 v 34

Statutory Inspection of Anglican and Methodist School (SIAMS)

I am incredibly proud to share the school's SIAMS Inspection Report with you. The full inspection report has been emailed to all parents/carers. As always, you are welcome to 'Stay and Pray' with us each Friday at 9am. Hot drinks available from 8.30am!



Statutory Inspection of Anglican and Methodist Schools (SIAMS) Report

St. Giles Church of England Primary School, Willenhall

Vision

"You must love one another as I have loved you" John 13 v 34

Working together with love we will provide a happy and nurturing environment where all will, **'learn to love and love to learn'**, making outstanding progress through an enriched and creative curriculum. Through our strong Christian ethos we will celebrate and embrace the richness of our community.

Strengths

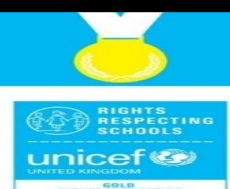
- The vision has great value placed on it by the school. It informs strategic actions and daily decisions. As a result, pupils and adults thrive in this loving community.
- The school curriculum is crafted around its vision and values. High-quality opportunities, including vulnerable pupils and those with special educational needs and disabilities (SEND) means that they prosper.
- Pupil voice is very strong and respected. There are multiple roles that encourage responsibility and leadership. This motivates pupils to be agents of change in the global community.
- Parents and pupils value how well everyone is included and respected. Pupils care very well for each other, and they behave exceptionally well in both the classroom and during free times.
- The dedication and expertise of the leaders ensures that collective worship is well planned and led. Pupils enjoy worship and are very proud of being in the worship council and choir, leading worship for their peers and parents.

Development Points

- Embed a whole school understanding of spirituality. This is so that pupils have increasingly deeper opportunities to grow from times of reflection in the curriculum and in the outdoors.
- Within the religious education (RE) curriculum create opportunities for first hand experiences of worldviews and faiths. This is to enhance pupils' understanding of the diverse world in which they live.

WE ARE A UNICEF GOLD RIGHTS RESPECTING SCHOOL

Children's rights are learned, understood and lived in this school.



Friday 13th December
Nursery/ Reception/Years 1 and 2



Tickets: £5.00 (Book online)

No story captures the imagination of children more than

JACK & THE BEANSTALK,

when they will be transported to the magical setting of
PANTOLAND.

Packed solid with comedy, excitement and adventure, the children will love to cheer their hero JACK and boo the evil MAYOR BOTCHETT. They will roar with laughter at the antics of BARMY BOSWORTH and DIMPLES the cow, as they try to get the better of DAME MRS. LUMPKIN. All this is brought to life by a cast of 5 top entertainers from the world of PANTOMIME (playing 8 character parts). It's all good old fashioned fun that you would normally see in a top line theatre.



Grumpy Old Scrooge... Friday 20th December

**Years 1 to 6
Tickets: £5.00 (Book Online)**

As is tradition at St Giles' CE Primary, we welcome back Rage Arts Theatre on Friday 20th December for three festive performances of 'Grumpy Old Scrooge'. Please support with contributions, without which we cannot put on enrichment events.



Calling All Year 6 Parents!

It is a tradition at St Giles' CE Primary School, that parents work together to arrange and organise the end of year leavers' celebration in July for both pupils and parents.



There will be a stall in church on:
Saturday 30th November (School and Church Christmas Fair) to raise funds for the leavers' event.

Please do save the date and come along to support.



Christmas Events
St Giles' Church

Wednesday 11th December

**Nursery and Reception
Christmas Celebration**

11.00am (Nursery am + RS)

2.00pm (Nursery pm + RG)



Christmas Crafts and Stories

Parents are welcome to join us in the School Dining Hall for Christmas Crafts and Stories. Please sign up via the School Gateway app.

Monday 16th December

10am (Nursery am)

2.00pm (Nursery pm)

Tuesday 17th December

10am (RS)

2pm (RG)



Christmas Events
St Giles' Church

Wednesday 18th December

Year 2 Christmas Celebration
9.00am

Year 1 Christmas Celebration
10.30am



CHRISTMAS CHOIR

DPC

Christmas Musical Performances

The choir will be singing a range of traditional and contemporary songs on Thursday 19th December from 4.00-4.30pm in St Giles Church.

Parents/carers and family members are very welcome to attend, there is plenty of seating available.

Members of the community, including churches in Willenhall have also been invited to attend.

This wonderful festive concert, not to be missed.

Refreshments and Mince Pies will be available.



Christmas Musical Performances

The School Choir will be performing at Walsall Arena on **Wednesday 27th November.**

Tickets for this wonderful festive event can be purchased by following the link below.

[Christmas Past & Present](#)



Morrisons Community Christmas Sing Along

The School Choir will be performing a selection of their favourite Christmas songs at 10am on **Friday 13th December.** Please do come and join in with the festive fun...



Giving
Hope
Today

Salvation Army Community Christmas Sing Along

Class Charter Presentations In Church

Parents and Carers Welcome

9.00am start

Dates	UNICEF Charters Presentation Order
Friday 27 th September,2024	6G
Friday 4 th October,2024	6S
Friday 11 th October,2024	5S
Friday 18 th October,2024	5G
Friday 8 th November,2024	4G
Friday 15th November,2024	4S
Friday 22nd November,2024	3G
Friday 29 th November,2024	3S
*Friday 6th December,2024	*2S and 2G 2.30pm
Friday 10 th January,2025	1G
Friday 17 th January,2025	1S
Friday 24 th January,2025	Reception & Nursery

WE ARE A UNICEF GOLD RIGHTS RESPECTING SCHOOL

Children's rights are learned, understood and lived in this school.



School Nurse Service

Your School Nurse service offer FREE virtual workshops for Parents/Carers

Are you a Parent/Carer of a child or young person who is struggling with any of the following:

Sleep

Behaviour

Emotions

Toileting *(training and/or common problems)*

Healthy Lifestyles

Fussy Eating

Bedwetting

Scan the QR code for more information



Do you need advice and support about other health issues?
You can call our Single Point of Access on **01922 423349**.

We have resources to help you:

- Health for Teen Website for teenagers: www.healthforteens.co.uk
- Health for Kids Website for children: www.healthforkids.co.uk
- School Nursing Service Webpages: www.walsallhealthcare.nhs.uk/our-services/school-nursing
- ChatHealth – text messaging service to contact a School Nurse for advice
 - Teen ChatHealth - **07480 635363**
 - Parent ChatHealth - **07520 634909**

HCP 0-19 Service

Are you a parent/carer of a child/young person with Special Educational Needs and/or Disabilities?

Our SEND Team are offering weekly drop-in sessions covering the following:



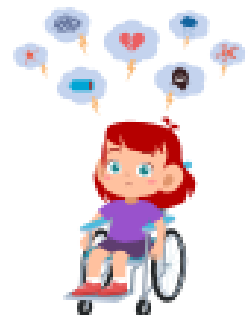
Toileting

Behaviour



Fussy Eating

Sleep



Emotions

🕒 9:30am-11:30am

📅 Every Thursday

📍 Child Development Centre, Coalheath Lane, Walsall, WS4 1NG

If you require advice and support from the Health Visiting Service, School Nurse Service or any of our teams, please contact our **Single Point of Access** on **01922 603074** or **send a text explaining your concerns** with your **child's name, date of birth** and **NHS number** to **07520 634909**.



Should I keep my child off school?

Yes

Until...

Chickenpox	at least 5 days from the onset of the rash and until all blisters have crusted over
Diarrhoea and Vomiting	48 hours after their last episode
Cold and Flu-like illness (including COVID-19)	they no longer have a high temperature and feel well enough to attend. Follow the national guidance if they've tested positive for COVID-19.
Impetigo	their sores have crusted and healed, or 48 hours after they started antibiotics
Measles	4 days after the rash first appeared
Mumps	5 days after the swelling started
Scabies	they've had their first treatment
Scarlet Fever	24 hours after they started taking antibiotics
Whooping Cough	48 hours after they started taking antibiotics

No

but make sure you let their school or nursery know about...

Hand, foot and mouth	Glandular fever
Head lice	Tonsillitis
Threadworms	Slapped cheek



SCAN ME

Advice and guidance

To find out more, search for health protection in schools or scan the QR code or visit <https://qrc0.de/minfec>.

Term Dates

2024/25 academic year

Autumn term 2024

Term ends: Friday 20 December 2024

Spring term 2025

Term starts: Monday 6 January 2025

Half term holiday: Monday 17 February 2025 to Friday 21 February 2025

Term ends: Friday 11 April 2025

Summer term 2025

Term starts: Monday 28 April 2025

Half term holiday: Monday 26 May 2025 to Friday 30 May 2025

Term ends: Monday 21 July 2025

INSET Days / Non– Pupil Days

Half term holiday: Monday 26 May 2025 to Friday 30 May 2025

Term ends: Monday 21 July 2025

~~INSET 1– Monday 2 September 2024~~

~~INSET 2– Wednesday 25th September 2024~~

INSET 3– Wednesday 29th January 2025

INSET 4– Wednesday 25th June 2025

INSET 5– Monday 21 July 2025



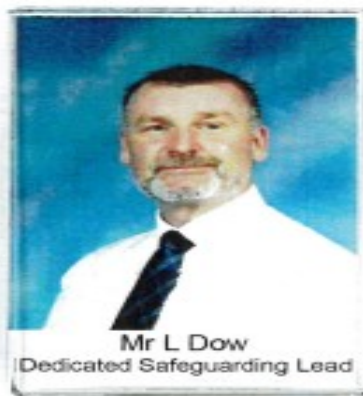
St Giles' CE Primary School **Safeguarding Team**



Mr Mark Dakin
Headteacher



Mrs Harsimrat Kaur Mavi
Deputy Headteacher



Mr L Dow
Dedicated Safeguarding Lead



Mrs Lindsey Leonowicz
Safeguarding Manager



Mrs Chemaine Green
Mental Health +
Behaviour Support Worker



Cllr. Simran Cheema
Safeguarding Governor

Safeguarding at St Giles' CE Primary School

2024/25

If you have any Safeguarding Concerns please contact

Mr Dow on:

07932 708724

ldow@st-giles.walsall.sch.uk

NSPCC ™

HELPLINE

0808 800 5000

help@nspcc.org.uk

If you have any concerns about a child, trust your instincts and contact the NSPCC Helpline. Our specialist team will listen, advise and take any action needed.

An estimated 1 in 20 children have experienced sexual abuse. And child sexual abuse is under-reported by adults. It's time for that to change.

It's never too soon to talk to us. And what you share could make a life-changing difference to a child.

You can contact the NSPCC Helpline by calling 0808 800 5000, emailing help@NSPCC.org.uk or completing our report abuse online form.

Due to an increase in demand across our service, our voice Helpline is currently available 11am–5pm Monday to Friday. You can still email help@NSPCC.org.uk or complete our report abuse online form at any time for free. You don't have to say who you are.

If you think a child is in immediate danger, please call the police on 999 straight away.