



# School Newsletter

## Friday 18th October 2024

*'You must love one another as I have loved you.'* John 13 v 34.

Working together with love we will provide a happy and nurturing environment where all will, **'learn to love and love to learn'**, making outstanding progress through an enriched and creative curriculum. Through our strong Christian ethos we will celebrate and embrace the richness of our community.

**Learn to Love - Love to Learn**

*'You must love one another as I have loved you.'* John 13 v 34

## Spirituality– St Giles' C.E. Primary School

### The 'Wow's, 'Ows' and 'Nows'

The language of spirituality begins from a Christian understanding that everyone is a valued creation, individually and uniquely made by God, like pots made by a potter (Isaiah 64:8). Yet in life things happen that impact on the physical 'pot' of life and create cracks that provide a glimpse of something 'beyond' the tangible.

Cracks may be caused when something so good and breathtaking that the pot expands and cracks- the **WOWs** of life.

Cracks may happen when something challenging happens and threatens the comfort of everyday. The **OWs** of life. Cracks can also happen in the stillness and ordinariness of everyday- the **NOWs** of life. A moment of stillness, a pause, prayer can create a crack in the normal, physical everyday.

**Today in church– Worship Leads introduced the Christian value of Wisdom. Parents/Carers are welcome to attend weekly worship in church each Friday from 9.00am-9.30am. Please do come along to worship with us.**

The 'WOW' Times – explores the spiritual possibilities of fantastic times.

*'You must love one another as I have loved you.'* John 13 v 34.

Working together with love we will provide a happy and nurturing environment where all will, 'learn to love and love to learn', making outstanding progress through an enriched and creative curriculum. Through our strong Christian ethos we will celebrate and embrace the richness of our community.

**Learn to Love - Love to Learn**

*'You must love one another as I have loved you.'* John 13 v 34

**The 'Wow's, 'Ows' and 'Nows'**

The language of spirituality begins from a Christian understanding that everyone is a valued creation, individually and uniquely made by God, like pots made by a potter (Isaiah 64:8). Yet in life things happen that impact on the physical 'pot' of life and create cracks that provide a glimpse of something 'beyond' the tangible.

Cracks may be caused when something so good and breathtaking that the pot expands and cracks the **wows** of life.

Cracks may happen when something challenging happens and threatens the comfort of everyday. The **ows** of life.

Cracks can also happen in the stillness and ordinariness of everyday- the **nows** of life. A moment of stillness, a pause, a prayer can create a crack in the normal, physical everyday.

The 'OW' Times – explores the spiritual possibilities of hard times.

**WE ARE A UNICEF GOLD RIGHTS RESPECTING SCHOOL**

**Children's rights are learned, understood and lived in this school.**

This term we will be focussing in school on the value WISDOM. We hope your family will find these ideas helpful as you explore the value and have fun together.

## TALK TOGETHER about Wisdom

**Wisdom** is different from just being clever. Often wise people have lots of experience and can give good advice to help us make difficult decisions. Some people pray because they believe that God can help them to live their lives **wisely**.

Talk together about:

- Making **wise** choices
- The consequences of our words and actions
- Learning **wisdom** from others – including children from parents and parents from children
- Learning from our mistakes and becoming **wiser** through them

## THINK TOGETHER Words of Wisdom

"It's no good shutting the stable door after the horse has bolted."

*Anon*

This is a well-known proverb. Can you think of a time when you did the right thing but too late?



## READ TOGETHER...

### The wise and foolish builders

Jesus told a story about two men. The first man was **wise** and decided to build his house on a rock. This house was hard to build. He had to stand on the rock and dig foundations deep down into that hard rock to make his house strong. He worked for many, many days before his new house was finished. It was a long time before he and his family could move in.

The other man built his house on the sand. This house was easy to build. The sand was soft, easy to stand on, and easy to dig into. He built his house very quickly and soon his family was living happily in their new house.

But then, one day it started to rain. It didn't rain gently. It didn't rain for just a few minutes. It poured. The wind blew and blew. All round new streams began to flow, making their own tracks across the rock and sands. The rainwater washed around the house on the rock and ran down the roads. But the house stood firm, it didn't move, and everyone inside was safe.

The family in the house on the sand looked out at the raging storm. Their house was creaking, it was moving. The water gushed all around. And then crash! As the sands shifted the house tumbled to the ground.

Jesus said, "The man who built his house on rock is like someone who listens to my **wise** teaching and builds their life upon it. When storms and troubles come, they will stand firm."

Bible story based on Matthew 7:24-27



## QUIZ Wordsearch

Can you find the words from the story?

- |        |             |          |
|--------|-------------|----------|
| WISE   | HOUSE       | FOOLISH  |
| STORM  | RAIN        | BUILD    |
| STRONG | FIRM        | CRASH    |
| ROCK   | SOFT        | CREAKING |
| SAND   | FOUNDATIONS |          |

F	U	E	T	W	K	T	F	W	M	L	S
S	O	S	D	W	I	O	W	R	V	A	V
F	B	U	W	L	O	S	O	G	N	P	E
C	X	O	N	L	I	T	E	D	C	T	Q
H	F	H	I	D	S	U	L	O	R	F	W
R	P	S	E	A	A	B	B	P	E	O	S
O	H	E	J	N	N	T	F	K	A	S	L
C	R	A	S	H	M	B	I	V	K	X	T
K	N	I	A	R	S	R	J	O	I	H	H
P	G	N	O	R	T	S	I	P	N	Y	L
X	L	G	Y	F	M	T	J	F	G	S	F
V	X	I	T	F	P	O	A	P	G	S	X



## FAMILY FOCUS

### Building a Wall of Wisdom

Everyone has a favourite proverb or wise saying. Talk to family members about proverbs that they think give **wise** advice. Ask them to explain the meaning of the proverb and add it to a 'wall of **wisdom**'.

Build your wall by writing each proverb on a 'brick' cut out of paper. Blu-tack the bricks on to a wall.

You can find lots of proverbs on [www.phrases.org.uk](http://www.phrases.org.uk)

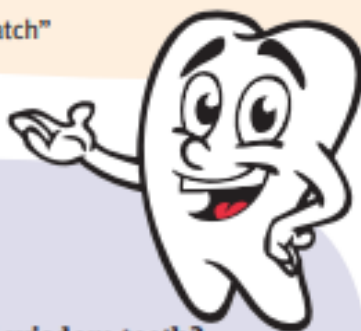


To start you off here three well-known proverbs:

"A chain is only as strong as the weakest link"

"Many hands make light work"

"Don't count your chickens before they hatch"



## HOME-SCHOOL CHALLENGE

### A Brick for the Wall

Make a shoe box 'brick'. Cover the box with paper and write your favourite proverb on the brick.

Then, either in a cartoon drawing or in words (hand written or typed on the computer and printed), tell a story using your proverb as the moral. Finish with the words:

So this proves the proverb, ".....".

(For example, So this proves the proverb "Don't count your chickens before they hatch".)

Decorate the brick so it looks fantastic and take it to school to help build a Wall of **Wisdom**.



## HALL OF FAME

### Confucius

Confucius was an ancient Chinese teacher. He lived more than 2500 years ago but such was his **wisdom** and understanding that his teaching is still remembered today.

Confucius wanted everyone to see the importance of making **wise** and thoughtful choices.

One of his sayings is...

"Everything in creation has a beauty of its own but not everyone is able to see it."



## FASCINATING FACTS

### Why are some teeth called wisdom teeth?

- Your first teeth are called milk teeth. Can your Mum tell you when you cut your first milk tooth?
- Milk teeth normally fall out while you are in primary school and are replaced by adult teeth, which have to last for the rest of your life! Can you remember when your first milk tooth came out?
- **Wisdom** teeth grow much later than adult teeth in most people and are bigger, flatter teeth. Can one of the adults in the family remember when they grew their first **wisdom** tooth?

Over the centuries and in different parts of the world '**wisdom** teeth' have been known by many names:

- In Ancient Greece they were *sophonisteres*, thoughtful teeth.
- Later in Roman times they were given the name *dentes sapientiae*, teeth of wisdom.
- The name **wisdom** teeth was adopted in Britain in Victorian times.
- In Arabic speaking countries, the teeth are called *Ders-al-a'qel*, or teeth of the mind.
- In Spain they are referred to as *muela de juicio*, or teeth of judgment, because they grow as young people leave school and become **wiser** and have more responsibility.





**Friday 25th October**

**Diwali Disco**

**We will be ending the term with a special 'Diwali Disco' during the school day.**

**This is a non-uniform day and children are invited to come into school wearing party clothes and sensible shoes.**

**A collection will be made on the gate.**

**'Tuhanu Diwali diya bahut bahut badhaiyan.'**



Christmas Events  
St Giles' Church

**Wednesday 11th December**

**Nursery and Reception  
Christmas Celebration**

**11.00am (Nursery am + RS)**

**2.00pm (Nursery pm + RG)**



Christmas Events  
St Giles' Church

**Wednesday 18th December**

**Year 2 Christmas Celebration**  
**9.00am**

**Year 1 Christmas Celebration**  
**10.30am**



CHRISTMAS CHOIR

DPC

## Christmas Musical Performances

The choir will be singing arrange of traditional and contemporary songs o Thursday 19th December at 4.00pm in St Giles Church.

Parents/Carers and family members are very welcome to attend, there is plenty of seating available.

Members of the community. Including churches in Willenhall have also been invited to attend.

This wonderful festive concert, not to be missed.

Refreshments and Mince Pies will be available.




# Walking to school...

## Good for you, good for everyone

### Do you really need the car?

- Children who walk to school are more alert and more attentive than those who travel by car.
- Walking to and from school helps to keep children and adults fit.
- Walking is good exercise.
- The walk to school can help children develop the skills to stay safer when out and about independently.

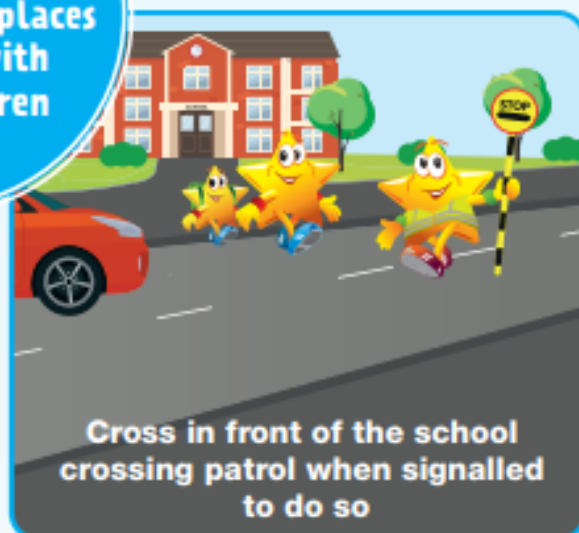


A walking start  
means a healthy  
heart

### Safer places to cross



Set a good example by using safer crossing places correctly with your children





# Green Cross Code

## Promote these steps below to cross the road safely:

Find the safest place to cross, are there any zebra, pelican or other crossings you can use?



**STOP** with feet behind the kerb



**LOOK** all around for traffic



**LISTEN** carefully for traffic/engine noises



**THINK** if traffic is coming let it pass.

When it is safe,  
cross in a straight  
line and do not run.  
Keep looking and  
listening while you  
cross.

Make sure your child can be seen.

**Fluorescent** materials are good for daytime,

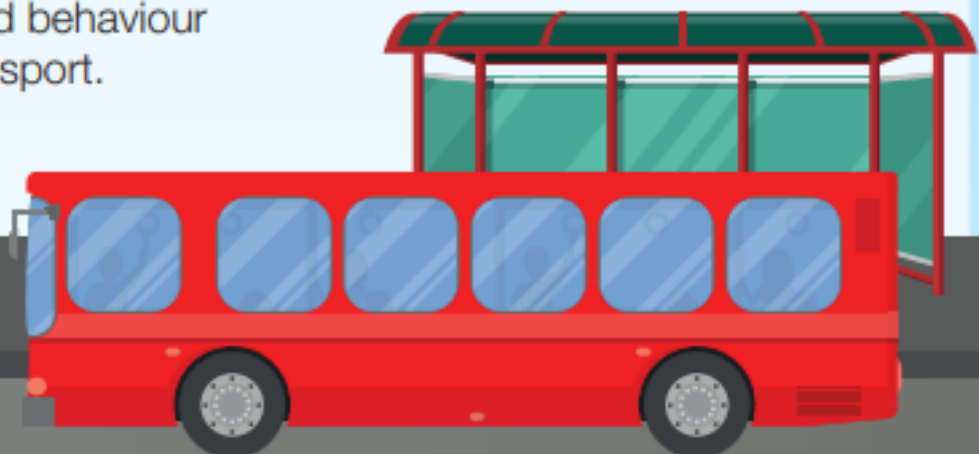
**Reflective** materials are good in the dark.

Always wear something bright!



## Travelling by bus or taxi

- Wait for the bus to move away before crossing the road.
- It is essential that your child understands the importance of good behaviour when using public transport.



# Class Charter Presentations In Church

## Parents and Carers Welcome

9.00am start

Dates	UNICEF Charters Presentation Order
Friday 27 <sup>th</sup> September,2024	6G
Friday 4 <sup>th</sup> October,2024	6S
<b>Friday 11<sup>th</sup> October,2024</b>	<b>5S</b>
<b>Friday 18<sup>th</sup> October,2024</b>	<b>5G</b>
<b>Friday 8<sup>th</sup> November,2024</b>	<b>4G</b>
Friday 15 <sup>th</sup> November,2024	4S
Friday 22 <sup>nd</sup> November,2024	3G
Friday 29 <sup>th</sup> November,2024	3S
Friday 6 <sup>th</sup> December,2024	2G
Friday 13 <sup>th</sup> December,2024	2S
Friday 10 <sup>th</sup> January,2025	1G
Friday 17 <sup>th</sup> January,2025	1S
Friday 24 <sup>th</sup> January,2025	Reception & Nursery

**WE ARE A UNICEF GOLD RIGHTS RESPECTING SCHOOL**

**Children's rights are learned, understood and lived in this school.**





Online Autumn Term Parental  
Consultations

Tuesday 22nd October  
4.00pm-7.30pm

Wednesday 23rd October  
4.00pm-7.30pm

\*Please respond to the Email which will be sent to your child's Primary Contact we have on file on Friday 27th September 2024.



## School Nurse Service

# Your School Nurse service offer FREE virtual workshops for Parents/Carers

Are you a Parent/Carer of a child or young person who is struggling with any of the following:

**Sleep**

**Behaviour**

**Emotions**

**Toileting** (*training and/or common problems*)

**Healthy Lifestyles**

**Fussy Eating**

**Bedwetting**

Scan the QR code for more information



**Do you need advice and support about other health issues?  
You can call our Single Point of Access on 01922 423349.**

We have resources to help you:

- Health for Teen Website for teenagers: [www.healthforteens.co.uk](http://www.healthforteens.co.uk)
- Health for Kids Website for children: [www.healthforkids.co.uk](http://www.healthforkids.co.uk)
- School Nursing Service Webpages: [www.walsallhealthcare.nhs.uk/our-services/school-nursing](http://www.walsallhealthcare.nhs.uk/our-services/school-nursing)
- ChatHealth – text messaging service to contact a School Nurse for advice
  - Teen ChatHealth - 07480 635363
  - Parent ChatHealth - 07520 634909

## HCP 0-19 Service

# Are you a parent/carer of a child/young person with Special Educational Needs and/or Disabilities?

Our SEND Team are offering weekly drop-in sessions covering the following:



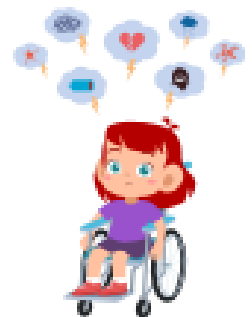
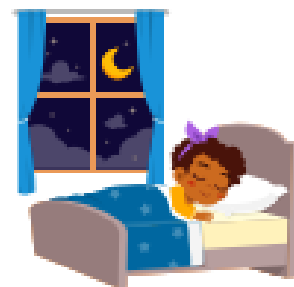
Toileting

### Behaviour



Fussy Eating

### Sleep



Emotions

🕒 9:30am-11:30am

📅 Every Thursday

📍 Child Development Centre, Coalheath Lane, Walsall, WS4 1NG

If you require advice and support from the Health Visiting Service, School Nurse Service or any of our teams, please contact our **Single Point of Access** on **01922 603074** or **send a text explaining your concerns** with your **child's name, date of birth** and **NHS number** to **07520 634909**.



# Should I keep my child off school?



## Yes

### Until...

<b>Chickenpox</b>	at least 5 days from the onset of the rash and until all blisters have crusted over
<b>Diarrhoea and Vomiting</b>	48 hours after their last episode
<b>Cold and Flu-like illness (including COVID-19)</b>	they no longer have a high temperature and feel well enough to attend. Follow the national guidance if they've tested positive for COVID-19.
<b>Impetigo</b>	their sores have crusted and healed, or 48 hours after they started antibiotics
<b>Measles</b>	4 days after the rash first appeared
<b>Mumps</b>	5 days after the swelling started
<b>Scabies</b>	they've had their first treatment
<b>Scarlet Fever</b>	24 hours after they started taking antibiotics
<b>Whooping Cough</b>	48 hours after they started taking antibiotics

## No

but make sure you let their school or nursery know about...

<b>Hand, foot and mouth</b>	<b>Glandular fever</b>
<b>Head lice</b>	<b>Tonsillitis</b>
<b>Threadworms</b>	<b>Slapped cheek</b>



SCAN ME

### Advice and guidance

To find out more, search for health protection in schools or scan the QR code or visit <https://qrco.de/minfec>.



## Term Dates

### **2024/25 academic year**

Autumn term 2024

Term starts: Monday 2 September 2024

**Half term holiday: Monday 28 October 2024 to Friday 1 November 2024**

Term ends: Friday 20 December 2024

Spring term 2025

Term starts: Monday 6 January 2025

Half term holiday: Monday 17 February 2025 to Friday 21 February 2025

Term ends: Friday 11 April 2025

Summer term 2025

Term starts: Monday 28 April 2025

Half term holiday: Monday 26 May 2025 to Friday 30 May 2025

Term ends: Monday 21 July 2025

### **INSET Days / Non-Pupil Days**

Half term holiday: Monday 26 May 2025 to Friday 30 May 2025

Term ends: Monday 21 July 2025

~~INSET 1 – Monday 2 September 2024~~

~~INSET 2 – Wednesday 25th September 2024~~

INSET 3 – Wednesday 29th January 2025

INSET 4 – Wednesday 25th June 2025

INSET 5 – Monday 21 July 2025



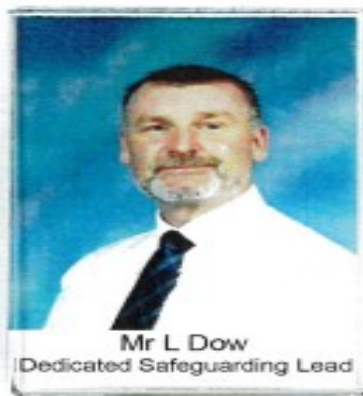
# St Giles' CE Primary School **Safeguarding Team**



Mr Mark Dakin  
Headteacher



Mrs Harsimrat Kaur Mavi  
Deputy Headteacher



Mr L Dow  
Dedicated Safeguarding Lead



Mrs Lindsey Leonowicz  
Safeguarding Manager



Mrs Chemaine Green  
Mental Health +  
Behaviour Support Worker



Cllr. Simran Cheema  
Safeguarding Governor

## Safeguarding at St Giles' CE Primary School

2024/25

If you have any Safeguarding Concerns please contact

Mr Dow on:

07932 708724

[ldow@st-giles.walsall.sch.uk](mailto:ldow@st-giles.walsall.sch.uk)

**NSPCC** ™

**HELPLINE**

**0808 800 5000**

**help@nspcc.org.uk**

**If you have any concerns about a child, trust your instincts and contact the NSPCC Helpline. Our specialist team will listen, advise and take any action needed.**

An estimated 1 in 20 children have experienced sexual abuse. And child sexual abuse is under-reported by adults. It's time for that to change.

It's never too soon to talk to us. And what you share could make a life-changing difference to a child.

You can contact the NSPCC Helpline by calling 0808 800 5000, emailing [help@NSPCC.org.uk](mailto:help@NSPCC.org.uk) or completing our report abuse online form.

Due to an increase in demand across our service, our voice Helpline is currently available 11am–5pm Monday to Friday. You can still email [help@NSPCC.org.uk](mailto:help@NSPCC.org.uk) or complete our report abuse online form at any time for free. You don't have to say who you are.

**If you think a child is in immediate danger, please call the police on 999 straight away.**